



# PRESS PACK

Press release liable to be updated with the new information throughout the season. Check it out regularly!



**NEW!**

You can now go to our **new Press Area**, which is completely dedicated to you. It is more functional to allow you year-round access to all our information, news, photo and video libraries and other documents that we put on line for you on

*<http://www.compagniedumontblanc.fr/fr/societe/espace-presse>*

This season, let's break with our usual habits , avoid tedious descriptions and go straight to the heart of the matter by showing you below each of our attractions and areas highlighting their characteristics and bringing you Compagnie du Mont-Blanc news, both of which can be accessed by dynamic link on our web site:  
[compagniedumontblanc.fr](http://compagniedumontblanc.fr)

## Summary

- P6. At each visiting site, each ski area, its specific
- P14. The dynamic of the investment policy is on-going!
- P21. The attractions come to life
- P26. Events carved into the winter calendar
- P28. Compagnie du Mont-Blanc news
- P33. The Compagnie du Mont-Blanc good deals

**Good discovery!**

**NEW!**

We have to begin this latest press release with the front page, headline news : as of the winter season 2015/16, the “Mont-Blanc UNLIMITED” pass holders (2 day to annual duration) have unlimited access to the ski resorts included “Evasion Mont-Blanc” area.

For skiers & snowboarders of all levels who choose this pass, a vast playground opens up for them : the Chamonix valley, Megève, Les Houches – Saint Gervais, Les Contamines, Courmayeur. In short, all the Mont-Blanc territory in one & the same pass!!

All practical information :  
**[compagniedumontblanc.com](http://compagniedumontblanc.com)**

## The MONT-BLANC Unlimited is changing into a «Territoire Mont-Blanc» product



MONT-BLANC  
**Unlimited**

**A single pass to ski in the Chamonix Valley,  
Courmayeur ... and new for this winter, in the Evasion  
Mont-Blanc ski area!**

A first result of the Compagnie du Mont-Blanc and Megève moving closer, from this winter the MONT-BLANC Unlimited (MBU) lift pass will give access for skiing and safari tours of the tourist attractions and ski areas in the Chamonix Valley, Courmayeur and the Evasion Mont-Blanc ski area from Megève, Saint Gervais, Les Contamines...

Verbier 4 valleys also remains a favoured associate of this «Super pass» with a day's access per week at 50% of the public price for 6-day holiday passes and free for season – annual passes.

***With the MBU pass, the territoire MONT-BLANC is now positioned naturally and more than ever as the biggest and finest winter mountain playground!***

Negotiations are in progress on the terms of access to les Contamines, les Portes du Mont-Blanc...



## **Each attraction and each ski area has its own particular features ...**

The Compagnie du Mont-Blanc has been operating the attractions and ski areas in the Chamonix Valley as well as the les Houches-Saint Gervais ski area since the early 2000's.

### **3 tourist attractions:**

The Aiguille du Midi  
The Montenvers –Mer de Glace  
The Mont-Blanc Tramway

### **4 ski areas**

The Grands Montets  
Brévent-Flégère  
Balme (Le Tour – Vallorcine)  
Les Houches – Saint Gervais

## **The Aiguille du Midi**

### **Ready for a serious thrill?**

New technologies, extreme altitude, the high mountain world, a complete experience made accessible by this cable car, the building and maintenance of which are adventures in themselves! A world where thinkers and mountaineers from all over the world rub shoulders and can only wonder at the magnificent 360° panoramic view before their eyes! A place where round each corner is a new discovery, where new features like the Step into the Void and soon the Pipe are feats of technology ...somewhere out of the ordinary, out of time, out of this world!



## **The Montenvers-Mer de Glace**

### **Between past and future ...**

This history-laden attraction at the foot of the famous Mer de Glace is now oriented towards the future with major plans in the pipeline that we shall be able to reveal to you very soon! With the evolution of the glacier it overlooks and all that it has experienced over the ages, the place could tell its own story and become living proof of climate change in our own era! A second wind, a new role for this attraction testifying, demonstrating, teaching and foretelling the future ...





## The Mont-Blanc Tramway

### A «shuttle- train» to the ski area!

From Le Fayet – Saint Gervais and other stops along the line, the Mont-Blanc Tramway is the other way to reach the les Houches-Saint Gervais ski area, a high altitude ski and leisure area (snowshoes, ski camps...) Between an excursion and a shuttle, this authentic, useful and typical rack railway offers you splendid views over the valley and surrounding peaks throughout your journey.



## **Les Grands Montets**

### **Did you say great skiing?**

The choice is yours between groomed or ungroomed pistes, but the pistes are always made safe! A north facing ski area with excellent snow throughout the season. It 's not for nothing that skiers from the world over call it «The Mecca of Skiing» and since last year there's no more waiting to reach the ski area courtesy of the new Plan Joran telecabin. So don't hesitate, choose great skiing!



## **Brévent-Flégère** **THE linked ski area of the Valley!**

You can reach the ski area from the centre of Chamonix or from the village of les Praz (2 km) and make the most of the sunshine in this south-facing area. From steep skiing to large pistes crossing from one area to another, there is something for everyone whatever their taste or ability and always with the splendid panorama of the Mont-Blanc chain and the Mer de Glace in front of you!



## Balme

### Cross-boarder skiing between France and Switzerland.

This is the last ski area before the Swiss border and is the “all-ability” area *par excellence*! Lovely long pistes, superb off-piste, discovery skiing, entertainments, a view over the whole Chamonix Valley and two points of entry ; either from the village of le Tour or from Vallorcine ... all to feast your eyes and for the pleasure of snow-riding!



## **Les Houches skiing for sporty families**

Multi-riding sports, multi-levels and, multi-views.... Les Houches is the ski area of all the «multis» where everyone, on their own, as a couple, with the family or amongst friends can find the snow riding or the activity that suits them. From the World Cup piste to the beginners' arena via snowshoe circuits and the snow camp... a whole world dedicated to skiing and snow-covered discoveries!





**The dynamic of the investment  
policy is on-going!**

# BREVENT : THE BEGINNERS' AREA

This autumn on the south face in Brévent, work has been going on to build a funicular aimed mainly at beginners to enable them to get from the top of the telecabin to the Planpraz plateau and the 2000 draglift more easily. This will enable them to progress at their own speed on the high altitude ski area with good quality snow and maximum sunshine throughout the season.



This new lift, called FUNI 2000, operates by the movement of a cabin (of the telecabin type) mounted on a chassis itself moving on rails or tubes. Movement from top to bottom and from bottom to top is achieved by means of a cable which rolls up (when climbing) and unrolls (when descending) from the top station.

## Technical data:

Operating: automatic (like a vertical lift)

Length: 70 m

Height differential: 37 m

Number of cabins: 1

Capacity of the cabin: 16 to 20 places

Hourly capacity: 250 to 290 persons per hour

# LES HOUCHES : THE MELEZES CHAIRLIFT

The 1<sup>st</sup> 4-seater, declutchable chairlift will be operational in les Houches for this winter, opening scheduled for the Christmas holidays.

Cha / Chamois is a whole new sector which is opening to skiers. This chairlift is built with complete respect for the environment and will replace the cha and chamois chairlifts which are at the end of their useful life and will be completely demolished.

## Technical data:

Length: 1185 m

Height differential: 237 m

Number of seats: 72 declutchable seats

No of people / seat: 4 places

Hourly capacity: 2,000 persons per hour

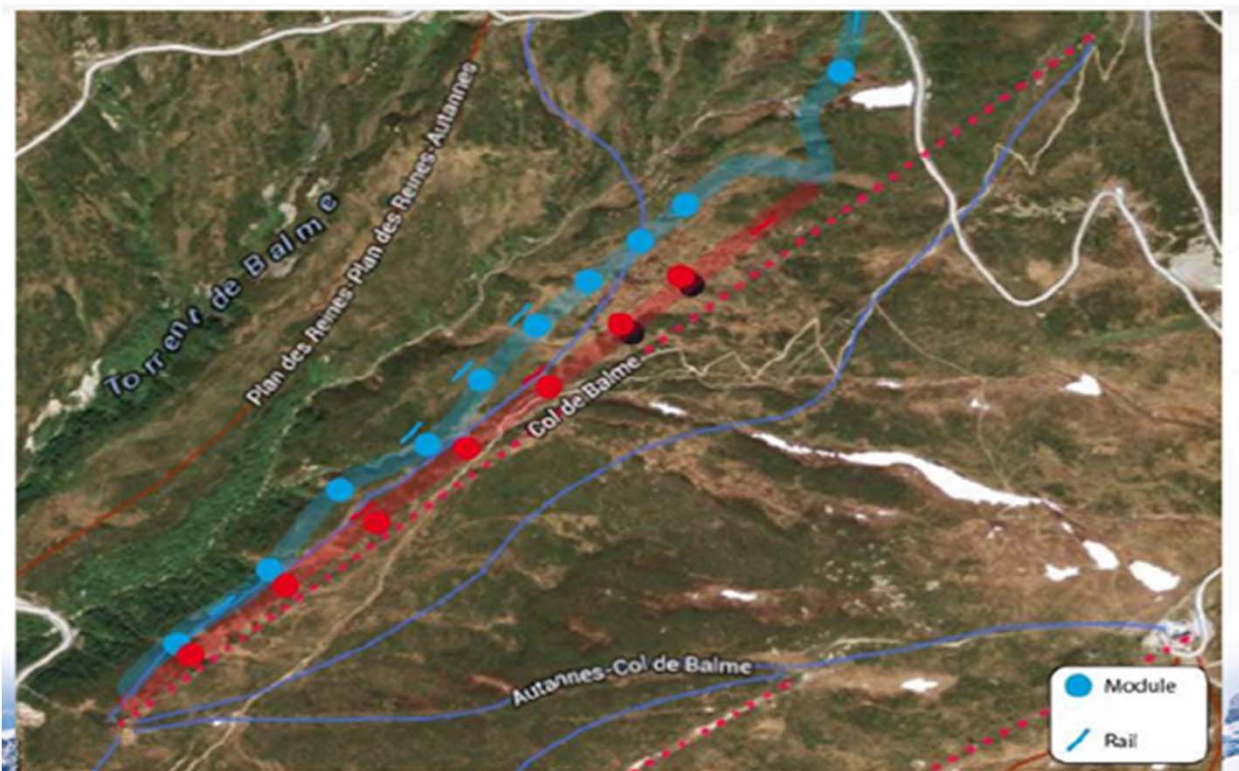


© Joëlle Bozon



# BALME : CREATION OF THE CHAMONIX SNOWPARK

1000 m long and 100 m wide, the new freestyle area created in Balme to the right of the Col draglift is amongst the largest in Europe. Reached by a dedicated draglift and a 4-seater chairlift, this snowpark sits between an altitude of 1900 and 2100 m and enjoys substantial natural snow coverage. It has two courses, one for beginners /enthusiasts and the other for experts. It also benefits from a «Cool Zone» with a sound system for relaxing after the effort.



## Technical data:

Beginners' / enthusiasts' course    Level blue S

Experts' course                      Level Red /M and Black /L (FIS approved for competitions)

# GRANDS MONTETS : THE SUMMIT CROSS

The New Snow-riding area in les Grands Montets specialises in cross with two courses: a BMW fun course with video system and timing equipment, perfect for family memories and an enthusiasts' / experts' course, which meets FIS standards for enthusiasts and clubs.



## Technical data:

BMW Fun Course:	Length	400 m
	Obstacles	3 jumps, 8 whoops, 2 banked turns
Enthusiasts' course	Length	800 m
	Obstacles	5 jumps, 10 whoops, 8 banked turns

# AIGUILLE DU MIDI

## New cabins on the first stage of the cable car

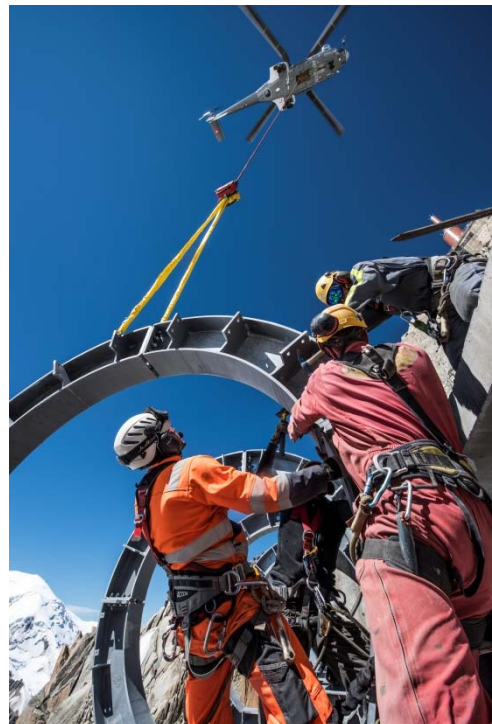
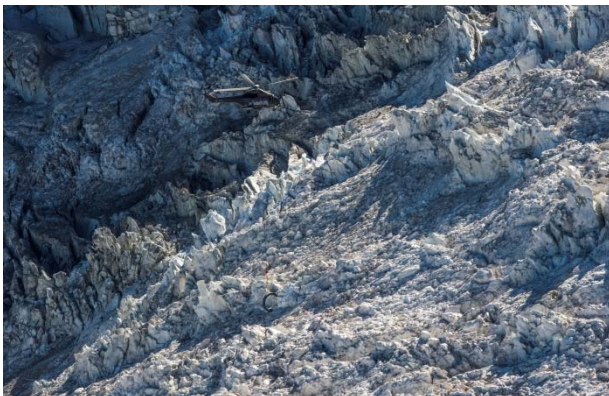
The cabins on the 2<sup>nd</sup> stage of the cable car having been changed last year, it is those on the first stage which will be replaced this season with the same panoramic cabins supplied by the Swiss company, CWA. Cabins which offer a panoramic view over the whole landscape and the surrounding peaks throughout the climb from Chamonix. Now it's more than just an uphill ride, it's a real journey for our clients...



# AIGUILLE DU MIDI

## Opening of the «pipe» scheduled for spring 2016!

After the spectacular arrival of the parts for the structure in a Super Puma on 5 August, work on the «Pipe» is continuing this autumn and progress is excellent. Opening is still planned for next spring ...  
See a « Timelaps » of the helicopter transport of the structure by following the link below...





**The attractions come to life**

## All areas

A «giant» roving treasure hunt has been organised this winter in conjunction with the HO5 company to entertain little ones and grown-ups visiting the attractions: Flégère, Montenvers and Les Houches-Saint Gervais, a treasure hunt for a fun and congenial way to explore ...



## Les Houches

The «Ski camp» is getting bigger and is moving. The toboggan run, snow tubing piste, curling, zip wires for children, biathlon shooting in February, AVD Park ...the Ski Camp is the place to discover mountain activities. This year it will be found at the bottom of the le Prarion beginners' area where you will also find clues for the treasure hunt.



## Brévent – Flégère

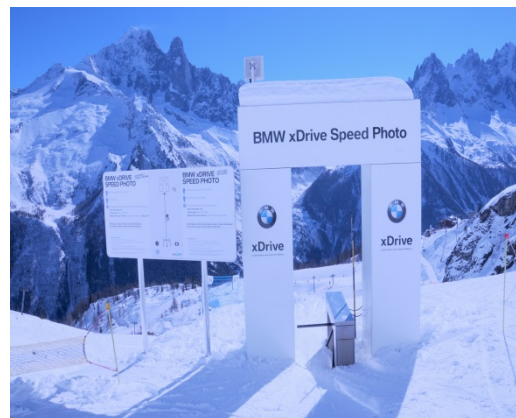
In Brévent, the **slalom course** has been moved to the left of the Parsa chairlift, retaining its filming and timing equipment. The area is open to everyone to try out a classic Alpine skiing sport. Still in conjunction with BMW

In la Flégère, the «**MONT-BLANC Legend**» Zone, much appreciated by families last winter, will be laid out again on the les Libellules piste with the addition of a chalet and 2 BBQ's for clients' use and fun furniture to amuse the children.

This area also contributes to the overall Treasure Hunt concept set up at 3 of our sites.



Finally, the **timed Speed Skiing piste** will be awaiting thrill-seekers and adrenaline junkies again this winter.



## Les Grands Montets



From the Lognan Plateau, you will be able to try out the new **FREERIDE ZONE**, set up in conjunction with SKI LINE and the DYNASTAR brand, where everyone will be able to try this off-piste sport and admire their exploits as the run will be filmed to be viewed on line...

## Balme

An « **AVD (avalanche victim detection) training** park to test your skill in using avalanche victim detection equipment with free entry is located to the right of the les Posettes piste. To be visited in advance ... because afterwards it's too late ...



## **Aiguille du Midi**

A **Hypoxia area** is being set up in this location so that visitors can learn about the effects of the lower oxygen levels found at altitude on the body. More details in a few weeks ...

## **Montenvers – Mer de Glace**

The partnership between le Montenvers-Mer de Glace and the Alpes Bivouac company is being maintained this winter with the reconstruction of the igloo village near the Grand Hôtel and new for this season the «**Altidôme**» is being set up near the helicopter DZ. A cluster of several large igloos around which you will be able to meet the Inuit people on Wednesdays and Saturdays throughout the season and a number of entertainments will be organised during the school holidays: snowshoeing and hot chocolate are on the agenda as well as finding clues for the treasure hunt!





**Events carved  
into the winter calendar**

### **27 and 28 December 2015: Chamonix Unlimited Winter**

A winter foretaste of the big end-of-season festival. Concerts, soirées and entertainments on the pistes and in the resort.

### **5/6 February 2016 Freeride World Tour**

The world's best Freeriders will be gathering in Chamonix at the beginning of February for a stage on the sport's World Cup circuit which is attracting more and more followers and enthusiasts. The le Brévent ski area will play host to the competitors, support teams and spectators on the faces which made the resort's reputation in the extreme skiing world.

### **19/20 February 2016 Kandahar**

The cream of world skiing will be gathering in les Houches for this Alpine Skiing World Cup. For your diary: the combined on 19 February and the "Kandahar" downhill on 20 February on the famous «Verte des Houches», with a chance to attend the training sessions of the world's best from 16 February. A number of entertainments have also been organised in the ski area throughout the week.

### **From 7 to 11 April 2016: Chamonix Unlimited Festival**

The big end-of-season event. 5 days of skiing, concerts, soirées and entertainments in the finest locations in the Chamonix Valley, up the mountain and in the town centre.

### **1<sup>st</sup> May 2016 Freeride Day – Closure of les Grands Montets**

As every year the closure of this legendary ski area will be celebrated in fitting style. The programme and the theme for the day have not yet been revealed, so watch this space ...



## **Compagnie du Mont-Blanc news**

## **The management of the Megève ski area entrusted to the Compagnie du Mont-Blanc as of the 1st December 2015**

The Compagnie du Mont-Blanc group is proud to announce officially the acquisition of a majority share-holding in the company managing the Megève – Mont d’Arbois ski lift system (“SRMM”). Megève town council & the Rothschild group, both historic partners in the latter company, remain as important share holders.

This purchase is in perfect coherence with the strategy of Compagnie du Mont-Blanc. This strategy is based on modernizing & harmonizing the different resorts around the Mont-Blanc in order to facilitate the visitor experience, to create a true inter-resort offer, aimed at positioning the “Mont-Blanc Region” as the ideal playground for both French & international clientele.

“We are proud to write a new chapter in the history of the “Pays du Mont-Blanc” by creating a more attractive offer through innovation throughout our territory”, confides Mathieu Dechavanne, CEO of the Compagnie du Mont-Blanc group.

As of this winter season, the positive impact of this purchase will be visible through the “MONT-BLANC Unlimited” pass (available for long or short stays, for the season or for entire year). This unique pass gives access not only to the whole of the Chamonix valley but also to the neighboring ski resorts in Switzerland (Verbier) & Italy (Courmayeur). Henceforth, it also includes the “Evasion Mont-Blanc” & “Portes du Mont-Blanc” ski areas

See you on our ski areas & excursion sites to make the most of a “ski & visit safari” at the foot of Mont-Blanc.

## Chamonix Bus

The TRANDEV – Mont-Blanc Bus Company has won the bus transport concession for Chamonix and you will certainly have already seen the new red and white «CHAMONIX BUS» livery on the vehicles operating in the valley. The Compagnie du Mont-Blanc having financed 50% of the cost of the transport in winter was keen to play a role in optimising the service offered to customers on these vehicles.

Screens on the buses and the «*mulets*» (minibuses operating in the town centre) will provide information in real time about conditions and the opening of CMB attractions and ski areas.

An increase in the Compagnie du Mont-Blanc's participation this season has even contributed to the purchase of 5 extra buses, which are of the « new generation » and environmentally friendly.

Lastly, let us remind you that for several seasons now holders of CHAMONIX Le Pass and MONT-BLANC Unlimited lift passes enjoy free travel on these buses in the valley enabling them to get to the locations to which their pass entitles them to entry.

A collaboration which aims to be ongoing, efficient and oriented towards ever-greater satisfaction for tourists in the Chamonix Valley.

## **A partnership with the KÄSSBOHRER company**

In order to optimise its purchases of piste-grooming machines, the Compagnie du Mont-Blanc has decided to sign a proper partnership with the Kässbohrer company for the coming 5 years. This will allow for a delivery of new machines to the ski areas each year and thus a fleet that is always at the leading edge of innovation and environmental standards.



## **Le Montenvers-Mer de Glace is preparing for the future...**

A huge project at le Montenvers-Mer de Glace to make it the unmissable location in Europe and in the world for « live» observation and understanding of the effects of climate change on our environment in our era:

A complete redevelopment of the top station of the railway

The creation of a «centre for glacier and climate understanding», a vast interactive educational and scientific area of 400 m<sup>2</sup> devoted to the subject, which is intended to be sited under the esplanade which currently overlooks the terminal tongue of the Mer de Glace.

The construction of a telecabin to go down to the Mer de Glace, which according to the predictions of our glaciologists is expected to lose about 700 m between now and 2030. This telecabin with a bigger capacity will take tourists much further above the current arrival point and will enable the « cavers » who dig the ice cave every year to work in a much thicker part of the glacier.

This autumn, all these plans will be subject to the approval of departmental authorities such as the DREAL (*Direction Générale de l'Environnement de l'Aménagement et du Logement* – body responsible for the environment, development and housing) or the préfet's office and then national authorities next year in the hope of carrying out the work in 2018.





- **3 pass to ski in Chamonix**
- **Super promotion: Our season – annual passes**
- **The top deal: Buy on line!**



**CHAMONIX  
Le Pass**

**CHAMONIX Le Pass**, skiing up to an altitude of 2500 m in Chamonix, Argentière, Le Tour and Vallorcine only



**MONT BLANC  
Unlimited**

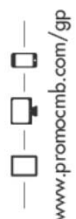
**MONT-BLANC Unlimited** the pass for skiing, tours and exploration with the Chamonix Valley, Courmayeur, the Evasion Mont-Blanc ski areas and links with Verbier 4 Valleys, not to mention entry to the ice rink, the swimming pool, the Chamonix museum and special rates for the Mont-Blanc tunnel etc etc



**CHAMONIX  
RapidCard**

**CHAMONIX Rapid Card** easy skiing in the Chamonix Valley, guaranteeing the best prices at the time of use and you only pay for the skiing you do, debited to your bank card weekly.

# Super promotion: Our season – annual passes



www.promocmb.com/gp

INFO & ACHAT  
en ligne et en caisse

du 17/10/2015 au 30/11/2015



## LE BON PLAN

FORFAITS SAISON & ANNÉE

THE BEST OFFER, SEASON & ANNUAL PASSES

VALLÉE DE CHAMONIX ET STATIONS PARTENAIRES  
LA PRÉVENTE EST **OUVRETE**

Votre forfait **Saison** ou **Année** jusqu'à **-40%**



EN PRÉVENTE SUR INTERNET DU 17/10 AU 30/11/2015  
PAIEMENT COMPTANT OU 3X SANS FRAIS

\* NOUVEAUTÉ : avec le MONT-BLANC Unlimited Accès au Domaine **Evasion** MONT-BLANC



## UN SEUL PASS, 100% SKI 3 GRANDS DOMAINES

CHAMONIX  
Le Pass

- Brévent - Flégère
- + Balme (Tour - Vallorcine)
- + Grands Montets (hors 2<sup>e</sup> tronçon)
- + Domaines «débutants et ski facile» de Chamonix :  
Le Savoy  
**NOUVEAU** : Plateau 2000 (Sommet Télécabine Planpraz)  
Les Planards  
La Vornaine  
Les Chosalets
- + Accès gratuit aux navettes et bus sur toute la commune de Chamonix



## VISITES & SKI SAFARI SUR 3 PAYS

MONT-BLANC  
Unlimited

- Tout CHAMONIX Le Pass
- + Domaine skiable Les Houches - Saint-Gervais
- + Les Grands Montets 2<sup>e</sup> tronçon
- + Accès aux trois sites mythiques :  
Aiguille du Midi (Piétons et Vallée Blanche),  
Montenvers-Mer de Glace  
et Tramway du Mont-Blanc
- + Domaines skiables partenaires :  
**NOUVEAU** : Evasion Mont-Blanc  
(au départ de Megève / Saint-Gervais / ... \*)
- + Verbier 4 Vallées (selon conditions, se renseigner)
- + Courmayeur
- + Accès navettes en Vallée de Chamonix  
Et beaucoup d'autres avantages à découvrir

\* : Autres points de départ domaines skiables Evasion Mont-Blanc en cours de discussion

**PROMO**  
Saison Adulte 16 - 44 ans

**719,00 €**

au lieu de 1.102,00 €

**PROMO**  
Année Adulte 16 - 44 ans

**899,00 €**

au lieu de 1.370,00 €

**ENFANT**  
4 - 15 ans

**-15%**

**SENIOR**  
65 - 74 ans

**-15%**

AUTRES TARIFS se renseigner

INFO & ACHAT  
en ligne et en caisse

du 17/10/2015 au 30/11/2015

www.promocmb.com/gp



**PROMO**  
Saison Adulte 16 - 44 ans

**965,00 €**

au lieu de 1.480,00 €

**PROMO**  
Année Adulte 16 - 44 ans

**1 190,00 €**

au lieu de 2.070,00 €

**ENFANT**  
4 - 15 ans

**-15%**

**SENIOR**  
65 - 74 ans

**-15%**

AUTRES TARIFS se renseigner

INFO & ACHAT  
en ligne et en caisse

du 17/10/2015 au 30/11/2015

www.promocmb.com/gp



## The top deal: Buy on line!

To avoid the queues and to enjoy a better price, think «Buying on line». Full details on

The screenshot shows the website for 'Compagnie du Mont Blanc' on a Windows desktop. The browser address bar shows 'http://www.compagniedumontblanc.fr/forfaits/vente-en-ligne'. The page features a navigation menu with icons for 'LIVE RADIO', 'METEO', 'OUVERTURES', 'WEDCAMS', 'PLAN', 'ACHAT EN LIGNE', and 'RESERVATION'. Below the navigation is a banner with a mountain landscape and the text 'Accueil > Produits & Forfaits > Vente en ligne'. The main content area is titled 'Vente En Ligne' and includes the heading 'Par internet : Fini l'attente aux caisses !'. A small image of a laptop displays the website interface. Text describes the benefits of online purchases, such as faster access and no queues. A 'DISPONIBLE' banner shows icons for 'MOBILE', 'TABLETTE', and 'INTERNET'. Below this is the section 'Achetez votre forfait sur internet' with a link to 'Achats en ligne'. On the right, a 'MENU' sidebar lists various passes and services like 'CHAMONIX LE PASS', 'FORFAITS HIVER', 'MONT BLANC UNLIMITED', 'CHAMVAL', 'E-GLOO PROTECT', 'MONT BLANC MULTIPASS', 'PASS SPORTS', 'BILLETTERIE', 'CHAMONIX RAPIDCARD', 'BOUTIQUE EN LIGNE', 'VENTE EN LIGNE', and 'RESERVATIONS'. The Windows taskbar at the bottom shows the date '05/11/2015' and time '12:24'.



**Presse contact:**

Fabienne MARTINEZ

COMPAGNIE DU MONT-BLANC

35, Place de la Mer de Glace

74400 CHAMONIX

04 50 53 22 75

06 12 68 18 86

[Fabienne.martinez@compagniedumontblanc.fr](mailto:Fabienne.martinez@compagniedumontblanc.fr)

**© J. BOZON – D. DELAPIERRE – D. FERRER – IMPLICITE – JOOL CHX**